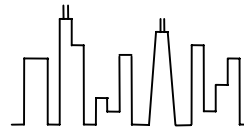


# CHICAGO SECTION NEWSLETTER

October 2001



Newsletter of the Chicago Section of the Society for Mining, Metallurgy, and Exploration, Inc. - Founded Spring 1987

## MEETING: Wednesday, October 24, 2001

**Topic:** “Fellowship and Conviviality: Meeting Attendance Incentive Night & Meet Your Fellow SME Member”

**Guest Speaker:** Gordon Stevens, P.G.  
Department Head – Geosciences, Versar, Inc.  
Lombard, Illinois



**Time:** 5:30 PM Social Hour  
6:30 PM Dinner  
7:30 PM Speaker



**Place:** Weinkeller Brewery  
651 Westmont Drive, Westmont, Illinois  
Telephone: 630-789-2236



**Directions:**

*From I-294:* Exit at I-88 Westbound, Pay 40 cent Toll, Exit at Route 83 South, Route 83 South to Ogden Avenue, Ogden Avenue West to Westmont Avenue on Right (North Side)

*From I-290 Westbound:* Exit at Route 83 South, Route 83 South to Ogden Avenue, Ogden Avenue West to Westmont Avenue on Right (North Side)

*From I-88 Eastbound:* Exit at Highland Avenue, Left to Southbound on Highland Avenue to Ogden Avenue, Left to Easton Ogden Avenue, East to Westmont Avenue on Left (North Side)

*From I-355:* Exit to I-88 Eastbound, Exit at Highland Avenue, Left to Southbound on Highland Avenue to Ogden Avenue, Left to Easton Ogden Avenue, East to Westmont Avenue on Left (North Side)



**Menu:** “German Feast,” which will include potato pancakes, chicken schnitzel, a couple of German sausage choices, cooked cabbage, sauerkraut, potatoes and desert. All served family style



**Cost:** \$25 for dinner/meeting. If you pay the \$20 annual Section dues the dinner cost will only be \$10. If you bring a first-time non-member or long time non-attender, their meal is only \$10 and if they pay (join the section) the annual fee their meal is free. Any Science teachers or professors brought as a guest will get dinner free. Students dinners will only be \$5.



**Call:** Sarah Schlichtholz of Continental Placer, Inc. at 630-469-6340x109  
or E-mail at [sschlic@continentalplacer.com](mailto:sschlic@continentalplacer.com) by October 22, 2001.



### From the Chairman

Once again, we are ready to begin the new SME meeting year for the Chicago Section. I welcome all of you back. Thank you for your vote of confidence in me as your Chairman again this year. I hope I can provide the leadership you deserve. I know one thing for certain, I have an excellent Executive Committee to assist me, virtually making my job as Chair much easier. Last year we were able to donate \$1,000 to the Science Teacher Workshop through our GEM Committee. In addition, we purchased 150 copies of the USGS Map - *A Tapestry of Time and Terrain: The Union of Two Maps – Geology and Topography*. Approximately 75% of these maps have been distributed to science teachers and other educators throughout the region. We still have more maps, which will be available during our upcoming meeting for you to pass out. I have big hopes for what we can accomplish toward our goals this year. One goal is to get a web site up and running for the Chicago Section of SME. Sarah Schlichtholz is well on her way towards developing the prototype. We hope to have the site posted on the internet in November. Another goal is to donate another \$1,000 to the Science Teachers Workshop. I look forward to working together to reach these goals and more. There is a lot of good we can do as members of SME and a lot of fun we can have doing it together. Thanks.



**Gordie Stevens**

## From the Vice Chairman/ Program Chairman

### ?This Meeting

In a new twist, we are kicking-off the season with a get-to-know-one-another and attendance incentive night. There will be no formal speaker, but Chairman Gordie Stevens will provide introductions and news on our past and present Section activities. We will also have GEM reports and Board of Director Reports.

### ?Last Meeting

**Mr. Steven Apfelbaum** of **Applied Ecological Services** of Brodhead, Wisconsin, described methods for integrating wetlands and plantings into mining, reclamation, and alternative storm water management plans. .

### ?Next Meeting

Wednesday, November 28, 2001.

-- **Kip Smith, V-C, P-C**

## GEM News

Welcome Back! GEM had a great summer. We hosted another successful **Science Teacher's Workshop** at Starved Rock this Summer. The teachers really enjoyed all the resources we had to offer. A BIG thanks to all who made it possible! Our success is dependent on the dedication and support of our industry, so keep up the good work. December will begin plans for the 2002 Workshop, if you are interested, please call me at 773-889-1412. Thanks,

--**Anne Leslie, GEM Coordinator**



## Rajaram in Turkey

**Vasudavan "Raj" Rajaram** of **Tetra Tech EM Inc.** presented a paper at the 17th International Mining Congress & Exhibition of Turkey that was held from June 19 through 22, 2001, at Ankara, Turkey. His paper entitled "Methodology for Estimating the Costs of Treatment of Mine Drainage" was coauthored by **Art Glazer** and **Gunarti Coghlan** also of **Tetra Tech EM Inc.** In addition to presenting the paper, he toured the wonderful rock formations in the Cappadocia area of Central Turkey. Raj met **Caner Zambak**, ex SME Chicago member, who now lives in Istanbul, Turkey. Raj has been busy during the summer with the cleanup of PCBs in the karst terrain of Bloomington, Indiana.

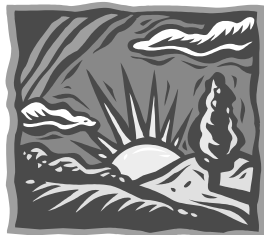
## Fischer's Eyewitnesses to WTC Tragedy

**Dan Fischer** spent Sept 15 thru the 24 in Manhattan. His wife **Cindy** watched from the roof of her hotel as the World Trade Center second tower fell. Dan drove out to bring her home. The mourning by the city was the most sorrowful event that he ever hopes to witness. The services held at St. Patrick's Cathedral, Washington and Central Park were heart wrenching. The candle light vigils were everywhere with posters and memorabilia of lost ones, particularly down near ground zero. Hopefully, we as a country will learn from this tragedy and will never allow it to happen again. Cindy's and my hearts go out to the families of the lost and missing.

-- **Dan & Cindy Fischer**

## A Tapestry of Time and Terrain

Last spring, the **Chicago Section of SME** purchased 150 copies of the USGS Map *A Tapestry of Time and Terrain: The Union of Two Maps - Geology and Topography* (Geologic Investigation Series I-2720).



This is a digital map of the United States derived from satellite data superimposed on a geologic map. The publication includes a full sized color poster wall-map and a 22-page text explaining the regional features on the map. This purchase is being used to promote Earth Science education in the region covered by our Section. We gave 75 free copies to our **GEM Committee** for distribution during the **Science Teachers Workshop** this summer. Many additional copies have been distributed to teachers and others interested in education by our section members. You can take copies and distribute them to science teachers in your local school districts. Please take the time to review the maps at our next meeting and present them to the teachers of your choice or anyone who may be interested. You can see an excellent internet presentation of the map including the regional write-ups and a full explanation of the process assembling the data for its construction at <http://tapestry.usgs.gov>.

## Kendorski Busy in Stone, Carbon Monoxide

**Frank Kendorski** with **Agapito Associates, Inc.**, had a busy summer defending a marble quarry in El Dorado County, California, against state threats of shut-down and reclamation plan denial for largely trumped-up causes. If you think mining is tough and under fire in Illinois, it is nothing compared to California. The State's **Mining and Geology Board** hired consultants to inspect the quarry, a family-owned operation named **Sierra Rock**. The consultants found highwall instability in 70-year old walls, setback encroachments by re-defining setback terms, and over-deepening or the quarry floor by GPS measurements to 0.01 ft(!). The quarry floor was never properly surveyed at the time of the reclamation plan approval by the County; and when the State took primacy, it held to a plan statement of a certain final elevation which was already exceeded at the time of plan approval. The State told the Owners to fill it in.

In Pennsylvania, Frank was retained by attorneys for a heavy construction company who had done blasting for rock excavation for a new interstate highway interchange near Scranton, Pennsylvania. The blasting for an off-ramp was done by drilling through over ten feet of in-place soil, and then into rock. The Owner, the State, directed the Contractor not to excavate the shot for over a week. It was winter and the ground was frozen.

Some residents about 100+ ft from the blast, were overcome by carbon-monoxide poisoning the next day. The residents filed suit claiming that the CO originated from the confined blast, traveled in the soil under the frozen ground and seeped into their houses. Amazingly enough, there is some truth to this, as Frank's research found 14 similar incidents in North America. The case settled out of court with the Contractor happy. Such incidents have since been published by the ISEE, and NIOSH is starting a research program on the phenomenon. If you are interested contact Frank at 630-792-1520 for a copy of his file of similar incidents.



## ***E-Mail Addresses Needed***

The Chicago Section of SME will be sending the Newsletter by E-Mail. We will still be mailing copies as well. **However, we need your E-mail address to send it to you.** Please E-Mail your E-Mail address to [frankatagapito@aol.com](mailto:frankatagapito@aol.com)

## ***Masters Retiring Nov. 1st***

**Jack Masters, of the Illinois State Geological Survey**, sends news that he will be retired as of November 1<sup>st</sup>. In order to preserve his luxuriant life-style as a state worker, he plans to see if he can find some geological consulting work. Jack can be reached a 217-344-0377 or by E-mail at [jmasters@uiuc.edu](mailto:jmasters@uiuc.edu). We wish Jack every success and a long and healthy retirement.

## ***Coal Waste Impoundment Collapses Eyed***

By NANCY ZUCKERBROD

c The Associated Press

WASHINGTON (AP) - More coal waste impoundment collapses like the one that sent 250 million gallons of sludge into eastern Kentucky's waterways could occur if preventative steps are not taken, according to a report due out Friday. The federal government needs to have increased oversight authority over coal waste impoundments, of which there are thought to be hundreds in the country, according to the summary of a National Research Council report. The 16-page summary, which was obtained by The Associated Press, says failure of the basin area of impoundments is a leading cause of accidents, but federal oversight of basins "has been less than rigorous." The report adds that federal agencies should be given "clear authority to review basin design."

In Inez, Kentucky., last year, Martin County Coal Corp. collected dirt and particles washed from freshly mined coal in a mountaintop sludge pond, but the waste escaped through a crack in the bottom of that impoundment. The sludge then flowed into a nearby underground mine and rushed off the mountainside, covering residential property and killing fish in area creeks. The report states that the government should set standards for mine surveying and mapping to ensure other impoundments are not established next to old mines, which can cause structural problems at impoundments. The council also recommended that the

Continued to right --

## ***Michigan Tech's Mining and Minerals Processing Engineering Programs Under Fire***

In a surprise move on October 4th, **Kent Wray, the Provost of Michigan Technological University**, proposed to the President and Board of Control that the Minerals Processing Engineering program be eliminated and that the Mining Engineering program be merged into the Geological Engineering and Sciences Department. The present Mining and Materials Engineering Department, only created last year by moving Minerals Processing Engineering into Mining Engineering, will be eliminated next summer, according to the proposal. The original name of Michigan Tech was the Michigan School of Mines when founded in 1885. If this disturbs you, as it does this editor, you can find who to write or call at <http://www.mg.mtu.edu>.

government come up with a coordinated plan for assessing the risk of impoundment failures, and it said more research is needed into waste disposal technologies that could replace impoundments.

Coal slurry consists of small particles of coal, rock and clay suspended in water. It is usually pumped into an impoundment and allowed to settle. In Appalachian states, coal companies typically use an area's natural topography to form the storage basin that contains the slurry. The most famous coal waste impoundment collapse occurred in Buffalo Creek, W.Va., in 1972. That accident killed 125 people and injured more than 1,000, the council's report said.

On the Net: National Research Council:

[www.nas.edu/nrc](http://www.nas.edu/nrc)



Chairman Gordie at Work in an Illinois Corn Field This Past Summer

## ***ISGS Engineering Geologist Position Announcement***

POSITION: Engineering Geologist - full-time state-funded appointment

LOCATION: The Illinois State Geological Survey (ISGS), a division of the Illinois Department of Natural Resources, is a premier state geological survey serving the needs of Illinois by providing geoscience information relevant to the State's environmental quality, economic vitality and public safety. The ISGS is located on the campus of the University of Illinois in Champaign-Urbana, a cultural and educational center that is ranked as one of the top ten "high tech" cities in the US. The area provides an attractive combination of small-city convenience and quality of life with ready access to world-class laboratory and academic facilities, Big Ten athletic events and internationally acclaimed cultural opportunities.

BRIEF DESCRIPTION: Conduct applied research and provide service and expertise in the area of engineering geology and geotechnical engineering. Assist in engineering geology related mapping. Provide prompt, authoritative and current information as requested. Manage and coordinate small projects, teams and committees; may instruct staff as required. Involved in the authorship of contract reports, publications and/or presentations at local or national meetings. Establish professional contacts with peers in Illinois and around the country and work toward professional recognition.

QUALIFICATIONS: Requires broad geotechnical background with emphasis in application to engineering geologic mapping related to construction limitation, landslide potential and soil amplification from earthquake ground motions; ability to perform laboratory and field testing for soil and rock properties and use geotechnical instruments to monitor soil and mass movements; demonstrated ability to write scientific reports on work conducted; good verbal communication, interpersonal and public speaking skills, and the ability to function well on multi-disciplinary teams. Skilled in word processing, spreadsheets, Internet and graphics software.

Must possess a valid driver's license, perform a medium-level of physical exertion including occasional lifting of 20 to 50 pounds, be willing and able to conduct field work under less than ideal conditions, and travel overnight for up to a

work week at a time.

Requires a bachelors degree in engineering geology or geotechnical/civil engineering with 7 years geotechnical work experience, masters degree in engineering geology or geotechnical engineering with 4 years work experience, or new Ph.D.

Prefer a masters degree in engineering geology or geotechnical engineering with 6 years geotechnical work experience, or Ph.D. with 2 years work experience.

STARTING SALARY: \$38,000 - \$45,000 (depending on qualifications)

BENEFITS: Generous vacation, sick, and personal leave with 12 paid holidays. State Universities Retirement System. State-sponsored group health, dental, vision and life insurance. University faculty/staff privileges.

CLOSING DATE: November 15, 2001

APPLICATION: For required application form, please contact:

Human Resources

Illinois State Geological Survey

615 East Peabody Drive

Champaign IL 61820

217-244-2401 (fax) 217-244-7004

[walston@isgs.uiuc.edu](mailto:walston@isgs.uiuc.edu)

[www.isgs.uiuc.edu](http://www.isgs.uiuc.edu)

Applicants should note that this position is exempt from the State Personnel Code and is under the Board of Natural Resources and Conservation (BNRC) and follows BNRC policies and procedures. This is not a bargaining unit position or a merit comp position. The Illinois State Geological Survey does not discriminate on the basis of race, color, sex, national origin, age, or handicap in admission to or treatment of employment in programs or activities in compliance with the Illinois Human Rights Act, the Illinois Constitution, Title VII of the 1964 Civil Rights Act, Section 504 of the Rehabilitation Act of 1973, as amended, and the U.S. Constitution.

## ***ILDNR Reclamation Award Applications Deadline Extended***

The Illinois Department of Natural Resources, Office of Mines and Minerals, Land Reclamation and Blasting and Explosives Divisions have established an annual Land Reclamation Award Program. This is the fifteenth year for the program.

The purpose of the program is to recognize outstanding and exemplary achievements in reclamation and is intended to promote high quality reclamation.

The attached package describes the details of the Reclamation Award Program. We hope the award program creates an atmosphere which increases the exchange of information and technologies and increases public awareness of achievements made by your industry in reclamation and protection of the environment.

The Illinois award winner will also be nominated for two (2) national reclamation awards, the National Association of State Land Reclamationists Reclamation Award and the Interstate Mining Compact Kenes C. Bowling National Mine Reclamation Award.

We invite your company to participate in the program. Please submit two complete packages of your application. Our field representatives are prepared to assist you in this effort. The deadline for submittal of the application is October 31, 2001.

The Mined Land Reclamation Award Program is intended to identify and recognize companies and individuals who maintain compliance with regulatory requirements and apply innovative techniques to reclaim land following mining activities. Through this award we are commending companies that have taken extra efforts implementing techniques which protect the public and the environment from any adverse effects of mining, while at the same time providing access to minerals that are vital to our state's economy and society.

The winner of Illinois' Mined Land Reclamation Award will be nominated by Illinois to compete in the Interstate Mining Compact Commission (IMCC) , and National Association of State Land Reclamationists (NASLR) Reclamation Award programs.

### **CRITERIA FOR SELECTION**

Criteria to be considered in judging for the Illinois Mined Land Reclamation Award includes:

**Compliance:** Although the OMM provides standard guidelines, and permitting requirements, the ways and means in which compliance is achieved by companies can vary greatly. Thus, the degree, effort and innovation for compliance can result in financial savings to the company. The nominated site will be evaluated on how the operator's effort has exceeded the spirit and intent of the law.

**Contemporaneous:** Regulatory guidelines require mining and reclamation activities both occur contemporaneously. The

techniques, time limits and distance limitation employed can result in substantial reclamation cost savings. The difficulty in achieving reclamation under the existing conditions will also be considered.

**Drainage:** Design, maintenance, and technologies employed can result in effective and efficient water quality treatment resulting in environmental benefit and cost savings for the operator.

**Post -Mining Land Use:** Preplanning for the desired post-mining land use including vegetation, planting evaluation procedures, reporting methods can all result in effective timely release of bond monies. This criterion will consider the success of vegetation and erosion control and the degree to which the post-mining land use has been established. Innovative land use planning and site stability will be considered.

**Innovative Practices:** Creative development and application of new technologies or techniques can result in resolution of reclamation problems, consequently resulting in substantial reclamation cost savings and environmental benefits. This criterion will also examine the presence of any long-term benefits to the surrounding community and the increased awareness of the law.

### **PROCEDURE FOR SELECTION**

To participate in the awards program two copies of your application must be submitted to the OMM by October 1. The application shall be in the form of a narrative naming the candidate, describing the specific job and techniques employed, summarizing the basis and highlights of the exemplary performance, and should include four (4) 8" x 10" photographs and a map (indicate scale) of the site. The narrative must not exceed five (5) typed, single spaced pages. If possible, at least one photograph should indicate the date when taken and should be coordinated with the map or aerial photograph of the site and the information in the nomination package. Support documentation may include pertinent facts about the site which shows that it stands apart from other similar projects in an extraordinary way.

Contact Linda Hiltabrand for an application at

***LHILTABRAND@dnrmail.state.il.us***

## ***2001-2002 Chicago Section SME Officers***

<b>Chairman</b>	<b>Gordie Stevens</b> Versar Lombard, IL 630-268-8555 x 1, 248# Fax 630-268-0555 stevegor@versar.com	<b>GEM Coordinator</b>	<b>Anne Leslie</b> Raimonde Drilling, Inc. Chicago, IL 773-889-1412 Fax 773-889-1923 rdcdrill@rdc-drill.com
<b>Vice-Chairman</b>	<b>Kip Smith</b> Harding ESE Oak Brook, IL 630-571-2162 x 17 Fax 630-571-0439 kjsmith@mactec.com	<b>Newsletter Editor</b>	<b>Frank Kendorski</b> Agapito Associates, Inc. Lombard, IL 630-792-1520 Fax 630-792-1580 frankatagapito@aol.com
<b>Secretary</b>	<b>Franz Reisch</b> American Colloid Co. Arlington Heights, IL 847-392-5800 Fax 847392-0465 franz.reisch@colloid.com	<b>Publicity Coordinator</b>	<b>Sarah Schlichtholz</b> Continental Placer, Inc. Glen Ellyn, IL 630-469-6340x109 Fax 630-469-6470 sshlic@continentalplacer.com
<b>Treasurer</b>	<b>Art Pincomb</b> Associated Geologists, Inc. St. Charles, IL 630-443-7027 Fax 630-513-2969 apincomb@inil.com	<b>Gofer/At Large</b>	<b>John Magyar</b> International Mining Services Belvidere, IL 815-547-9211 Fax 815-547-8552 imsjnm@aol.com

## ***Section Membership Dues Form***

*NOTE: You do not have to be a member of the Society for Mining, Metallurgy, and Exploration, Inc., of AIME to be a member of the CHICAGO SECTION of SME/AIME.*

**NAME:** \_\_\_\_\_

**AFFILIATION:** \_\_\_\_\_

**ADDRESS:** \_\_\_\_\_

\_\_\_\_\_

**E-MAIL:** \_\_\_\_\_ @ \_\_\_\_\_

**CITY, STATE, ZIP + 4:** \_\_\_\_\_

**DAYTIME TEL. NUMBER:** \_\_\_\_\_

**SPONSOR'S NAME:** \_\_\_\_\_

**STUDENT** \_\_\_\_\_ **RETIRED** \_\_\_\_\_

Make Check for \$20.00 (\$10.00 for Student or Retired) out to “**Chicago Section – SME**” and mail to: Art Pincomb, Treasurer, Chicago Section of SME, Associated Geologists, 311 Kautz Rd, Ste. 4, St. Charles, IL 60174

**NEXT MEETING  
WEDNESDAY, OCTOBER 24, 2001**

**“Fellowship and Conviviality:  
Meeting Attendance Incentive Night &  
Meet Your Fellow SME Member”**

**Weinkeller Brewery  
651 Westmont Drive, Westmont, Illinois**

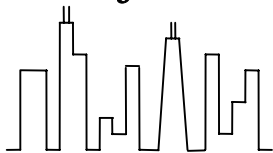
---

Editing, Paper, Copying, Stapling, and Sticking by Agapito Associates, Inc.; and this going to have to stop, I need help.

Frank Kendorski  
Newsletter Editor, Chicago Section SME  
Agapito Associates, Inc.  
2 East 22nd Street, Suite 307  
Lombard, IL 60148-6106  
630-792-1520

***FIRST CLASS MAIL***

***CHICAGO SECTION***



**SME**



**NEWSLETTER AND  
MEETING ANNOUNCEMENT ENCLOSED**

*PLACE MAILING LABEL HERE*

***DO NOT FORWARD  
ADDRESS CORRECTION REQUESTED***